



## ▶ GETTING STARTED WITH THE TEMPINSPECT USB

The **Tempinspect USB** is comprised of 4 main elements, highlighted here:

1. A **multifunction** button
2. Indicator LEDs (red and green LEDs)
3. USB connector (under plastic cap)
4. Instructional sticker with barcode

Use the **Tempinspect USB** in 6 steps, as covered in this guide:

1. Configure the desired **Temperature Monitoring Range**
2. Configure the desired measurement **Sampling Time**
3. Start the **Tempinspect USB**
4. Place the **Tempinspect USB** with the goods you wish to monitor
5. At the end of your shipment, stop the **Tempinspect USB**
6. Connect the **Tempinspect USB** to the computer to view the measurement reports

Configuration is done via the **multifunction** button. Steps 1, 2 and 3 can also be rapidly configured with our **Tempinspect Configuration Tool** software, available for download – see back side.

## CONFIGURING THE TEMPERATURE MONITORING RANGE

To select one of the Temperature Monitoring Ranges listed\*\* below, press the **multifunction** button as follows:

Range	Multifunction button	Confirmation
2°C to 8°C	2 clicks, then hold 5 seconds	2 red blinks
-1°C to -10°C	3 clicks, then hold 5 seconds	3 red blinks
-2°C to -8°C	4 clicks, then hold 5 seconds	4 red blinks
2°C to 25°C	5 clicks, then hold 5 seconds	5 red blinks
15°C to 25°C	6 clicks, then hold 5 seconds	6 red blinks
15°C to 30°C	7 clicks, then hold 5 seconds	7 red blinks
-30°C to -15°C	8 clicks, then hold 5 seconds	8 red blinks

## CONFIGURING THE SAMPLE TIME

To select one of the sampling times below, press the **multifunction** button as listed\*\*:

Interval	Multifunction button	Confirmation
1 minute	2 clicks	2 green blinks
5 minutes	3 clicks	3 green blinks
10 minutes	4 clicks	4 green blinks
15 minutes	5 clicks	5 green blinks
30 minutes	6 clicks	6 green blinks
1 hour	7 clicks	7 green blinks
2 hours	8 clicks	8 green blinks
3 hours	9 clicks	9 green blinks
4 hours	10 clicks	10 green blinks

By default, the **Start Delay** (interval between START and first measurement) is set to 10 minutes\*\*.

\*\*Temperature Monitoring Range, Sample Time, Start Delay and other parameters can be customized via software. See back side.

## CHECKING STATUS

During operation, the device may be in three different states. Click the **multifunction** button **once** to check:

LED blinks	Current state
One green, one red	<b>IDLE state:</b> device can be configured via <b>multifunction</b> button or via USB ( <b>Tempinspect Configuration Tool</b> ).
Four green	<b>RECORDING state*:</b> device is recording data.
Two red, two green.	<b>FINISHED state*:</b> device has been stopped. Connect it to the computer to view the generated reports.

\*After displaying the LED blinks associated to the state, the device will immediately show the **Visual Alarm** (see back side).

## STARTING/STOPPING

When in **IDLE** state, **START** the device to go into **RECORDING** mode. Then, **STOP** the device to go into **FINISHED** state. To **START/STOP** the device, press the **multifunction** button as shown below:

Multifunction button (START/STOP)	Confirmation
Hold 5 seconds, release, quickly hold another 5 seconds	16 alternating green/red LED blinks
12 clicks ( <i>alternative command</i> )	

## RESETTING

**For Multiuse version only:** to erase all the contents in the device's memory and go to the **IDLE** state, execute:

Multifunction button (RESET)	Confirmation
9 clicks, then hold 5 seconds	Red+green LEDs on for 5 seconds, then 4 green blinks

# QUICK MANUAL

## VISUAL ALARM

Input	Action	Confirmation
	Status: IDLE Status: RECORDING Status: FINISHED	
	2°C to 8°C (Default)	
	-1°C to -10°C	
	-2°C to -8°C	
	2°C to 25°C	
	15°C to 25°C	
	15°C to 30°C	
	-15°C to -30°C	
Attached to USB	Option locked or disabled on the device	
	Device is password protected	

To quickly know if the **Tempinspect USB** was exposed to temperatures outside the configured range, click the **multifunction** button **once** while in the **RECORDING** or **FINISHED** state. The device will first inform its **STATUS** (see the **CHECKING STATUS** section), then indicate, via the red LED, the duration of the most recent (if any) interval with out-of-spec temperatures:

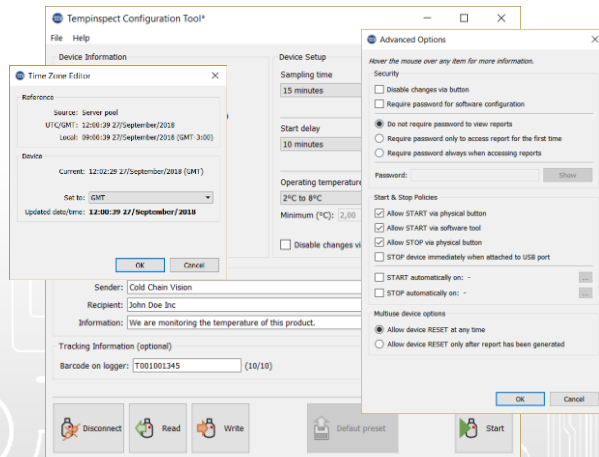
LED blinks	Meaning
One red	One measurement interval (i.e <i>sampling time</i> ) <b>ABOVE</b> the temperature limit.
Two red, fast	One measurement interval (i.e <i>sampling time</i> ) <b>BELOW</b> the temperature limit.

The device will show up to 10 contiguous intervals taken outside the configured range. For more details, check the generated PDF/CSV reports.

## CCV TEMPINSPECT CONFIGURATION TOOL

Through our software tool you can access more features and freely customize various parameters:

- Custom Temperature Monitoring Range
- Custom Sampling Time
- Custom Start Delay
- Input additional report information
- Configure the functionality of the **multifunction** button (provides increased safety)
- Enable password protection
- Configure automatic START and STOP dates
- Quickly save/load/write device configurations



Download the **Tempinspect Configuration Tool:**  
[www.coldchainvision.com/software](http://www.coldchainvision.com/software)

### LIMITED WARRANTY

COLD CHAIN VISION LTD'S Tempinspect USB Data Loggers have a limited warranty until the expiry date of the product against defects in materials and workmanship.

### Limitation of Liability

The total liability of Cold Chain Vision LTD with respect to any order, whether based on contract, warranty, negligence, indemnification, strict liability or otherwise, shall not exceed the purchase price of the product upon which liability is based. In no event shall Cold Chain Vision be liable for consequential, incidental or special damages.

### Warranty

Cold Chain Vision LTD shall warrant that the products are in operating condition at the time of shipment. The warranty shall be limited to the following provisions:

Tempinspect USB data loggers are temperature monitoring devices. Therefore, the manufacturer's liabilities are limited to the replacement of or refund for any instrument that may be defective or fails to function. Cold Chain Vision LTD will have no obligation to the extent that any failure of a product to comply with the limited warranty results from or is otherwise attributable to 1) negligence, misuse, 2) modifications, alterations or repairs to the products made by a party other than Cold Chain Vision LTD.

Cold Chain Vision have a limited warranty until the expiry of the product against defects in materials and workmanship. Cold Chain Vision LTD shall, at its option either repair or replace hardware products that prove to be defective, if a notice to that effect is received within the warranty period. Cold Chain Vision makes no other warranties or representations of any kind whatsoever, expressed or implied, except that of title, and all implied warranties including any warranty of merchantability and fitness for a particular purpose are hereby disclaimed.